



A simple, robust mapping service that elevates your listings.

Completely map your property and access it from anywhere:

- **Cloud-based mapping service** empowers you to create, edit, classify, and view properties
- **Customizable** - draw and edit your own property boundaries and features
- **Points of interest and rich media** - add pins, text, photos, and links
- **Viewers can select from several map layers** - Aerial, Road, Topography, Land Type, SSURGO Soils, FSA Field Boundaries, and more
- **Embed** maps on your website and **export** for printing in a variety of formats
- **Manage users** of your maps

The screenshot shows the LandMap Solutions web application. On the left is a sidebar with navigation links: Dashboard, My Account, Manage Agents, Manage Listings, and Assign Listings. The main area displays a map of a rural landscape with several yellow location pins. A pop-up window for a specific property is visible, showing details like PID, Title, Status, Description, and a Link. To the right of the map is a 'Basemap' menu with options: Aerial with labels, Aerial, Road, USA Topo Map, OpenStreetMap, National Geographic, Terrain with Labels, and Topographic. Below the map, there are statistics for 'Total Agents' (14) and 'Total Listings' (426). To the right of these are 'Listings Info' statistics: Number of Listings added today (0), Number of Listings added in this week (7), and Number of Listings added in this Month (18). At the bottom is a 'Recently Added Listings' table.

PID	Listing Name	Agent	Added on
119	Brown County Paradise	Timothy Jacobsen	3/20/2015
118	Coldwater Creek Ranch	Jonathan Smith	3/18/2015
117	Pine Ridge Ranch	Jackie Graham	3/17/2015
116	Cole Creek Acreage	Chris Overton	3/17/2015
115	O'Brien County Farm and Home	Betty Iverson	3/15/2015

Land Map Solutions' service surpassed my expectations and differentiates my company from the competition. My customers stay on my site longer, share the interactive maps, and help me gain attention to the listing! This is truly the most complete mapping tool for recreational land brokers." - Kyle Hubbard, Louisiana Outdoor Properties

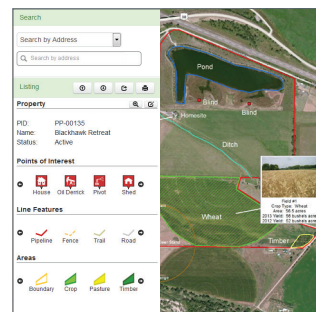
Land Map Solutions :: Features

Manage Listings						
<div> <div>Search:</div> <div> <div>Add Listing</div> <div>Copy</div> <div>Print</div> <div>Save</div> </div> </div>						
PID	Listing Name	Agent/Company	Company	Added on	Status	Actions
L-435	Brown County Paradise	Tim Jacobsen	Land LLC	March 20, 2015	Sold	Details View Map Download KML Delete
L-436	Coldwater Creek Ranch	Chris Overton	Land LLC	March 18, 2015	Active	Details View Map Download KML Delete
L-437	Pine Ridge Ranch	Tim Jacobsen	Land LLC	March 17, 2015	Inactive	Details View Map Download KML Delete
L-438	Cole Creek Acreage	Jackie Graham	Land LLC	March 17, 2015	Active	Details View Map Download KML Delete
L-439	O'Brien County Farm and Home	Chris Overton	Land LLC	March 15, 2015	Sold	Details View Map Download KML Delete
L-440	Dawes Creek Wildlife	Betty Iverson	Land LLC	March 15, 2015	Active	Details View Map Download KML Delete

Cloud Power

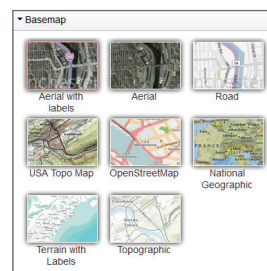
Bring the spatial component to your assets with a high level of data visualization and functionality. Your map assets are stored in the cloud and accessed through a secure web portal utilizing the intuitive and powerful LMS dashboard.

Why Land Map Solutions?	
PRODUCT OFFERING	
No software to install	✓
Built specifically for land sales	✓
Quick start with tutorials	✓
One license, no hidden fees	✓
FUNCTIONALITY & WORKFLOW	
Property location tools: Address; GPS location; PLSS Search (Township, Range, Section); Map navigation	✓
Reference Baselayers: Aerial; Street; Topography; PLSS (Township, Range, Section); Public Lands (Federal and State - where available); FSA Field Boundaries/Common Land Units	✓
Map the Property: Advanced measuring tools; Points, lines, and areas; Add description and photos to each feature	✓
Export options: Detailed digital maps (PDF or Jpeg) in several page sizes; Share map link on web page, email, or social media; Embed interactive maps on your website	✓
DESIGN AND MANAGEMENT	
Private, secure account containing all your property data	✓
Manage listings from a corporate level: See and manage all listings on the dashboard; Change ownership of listings; Set access restrictions (agents can only edit their assigned listings)	✓
Developed by experts in GIS, land sales, web programming and marketing, our team can assist in custom applications of LMS	✓
Integration: LMS was built to integrate into existing systems and is extremely scalable	✓



Create and Control

Create, edit, classify, and view your properties, then assign permission to edit them. Your data is saved to an internal database and is ready for you to add rich media - pins, descriptions, photos, and links. Your buyers get in-depth views of the property enhanced by the media you provide.

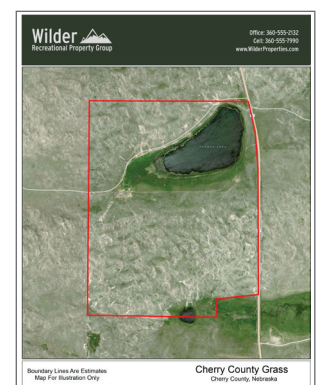


Map Layers

Unique map base layers geared towards land brokers for information about soils, land ownership, flood plains, and more. These include: Aerial, Street, Topography, OpenStreetMap, National Geographic, PLSS, Public Lands, FSA Field Boundaries.

Embed and Export

The interactive maps you create can be embedded on websites, accessed on mobile devices, and exported in several print formats for use in the field.



Land Map Solutions is developed by professionals in the land industry with direct experience in land and mapping issues, and by enterprise-level web and information technology experts who craft software with pride and precision. Read more about us at www.velosys.com.



info@velosys.com
www.velosys.com
 (402) 630-6787

18804 Front St., Suite 200
 Poulosbo, WA 98370

1261 Dyer Rd., Suite 240
 Santa Ana, CA 92705

P.O. Box 24872
 Omaha, NE 68124